



desert conservation  
PROGRAM  
respect, protect and enjoy our desert!

# Boulder City Conservation Easement Progress Update

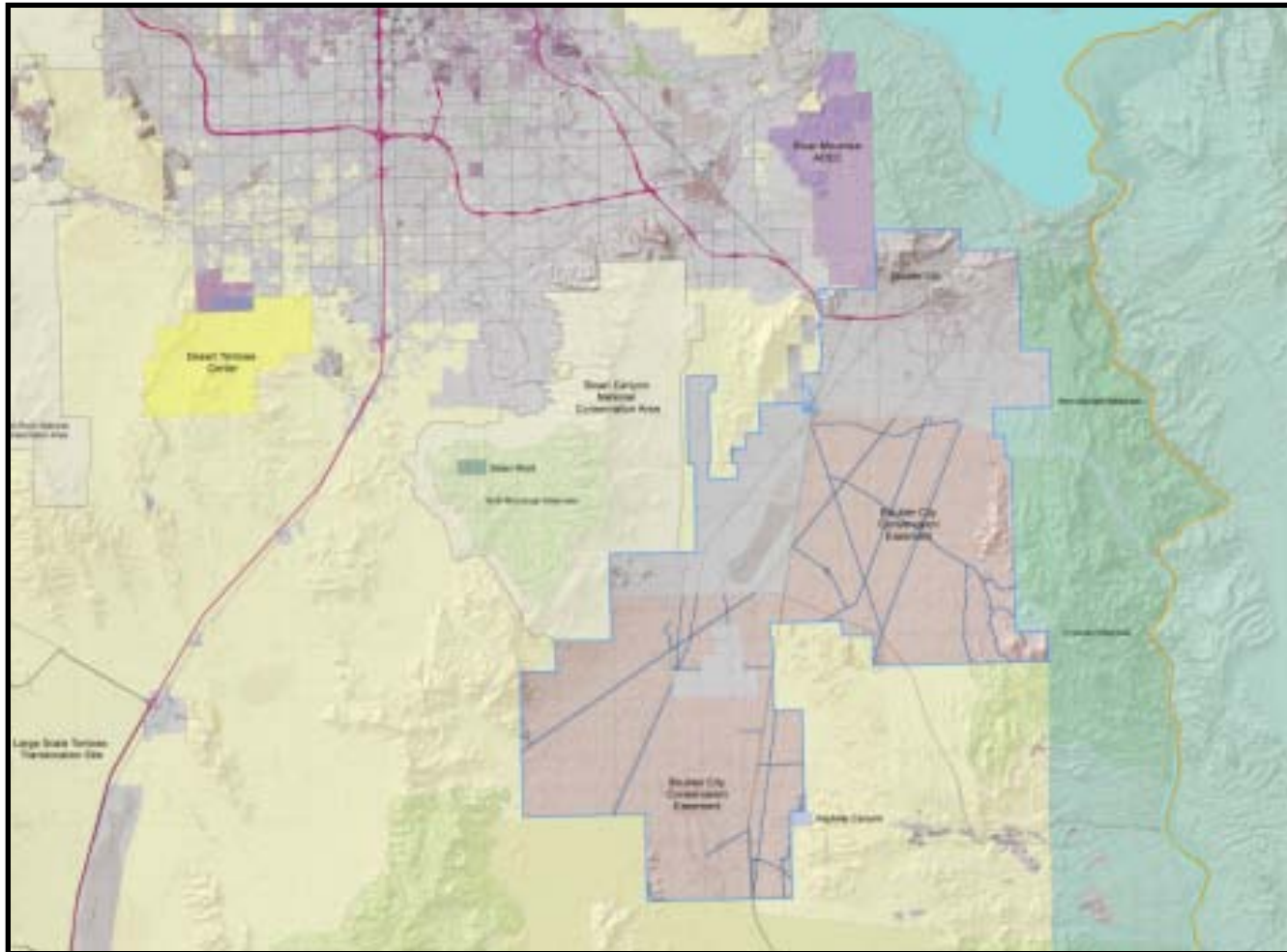
August 16, 2012



# desert conservation

PROGRAM

respect, protect and enjoy our desert!





- 58 Rights-of-way on the BCCE
- 95 miles of open roads on the BCCE
- Over 140 signs on the BCCE
- Speed limit on open roads is 25 mph
- Clark County contracts for law enforcement
- Recreational activity significantly decreases with high gas prices, excessive heat, cold and rain



desert conservation  
PROGRAM  
respect, protect and enjoy our desert!

# Signage





- Recently revised approach to signage for the BCCE
  - Removed more than 50 signs identifying closed roads
  - Only open roads on the BCCE are signed
  - All roads not signed as “open” for vehicle travel are closed
  - Currently in the process of collecting GPS data for all sign locations and other major infrastructure



desert conservation  
PROGRAM  
respect, protect and enjoy our desert!

OHV





desert conservation  
PROGRAM  
respect, protect and enjoy our desert!

# Tortoise Fencing





desert conservation  
PROGRAM  
respect, protect and enjoy our desert!

# Law Enforcement

## Purpose:

**First: To inform and educate**

**Second: To cite when necessary**





desert conservation  
PROGRAM  
respect, protect and enjoy our desert!

# Law Enforcement

- DCP contracts for law enforcement:
  - Nevada Department of Wildlife from 1995 to 1999
  - Michael Creathbaum from 1999 to 2003
  - Robert Oliver from 2003 to 2009
  - Boulder City Police Department beginning June 2009 to present



## **BCCE Patrol Statistics for 2011-2012**

- 1,700 hours of patrol
- 22,382 miles on patrol in and around the BCCE
- 228 members of the public contacted
- 77 maps, brochures and other handouts distributed
- Three citations issued for violations within the BCCE
- 20 warnings issued for minor violations
- One plane crash



- June 2012 DCP staff initiated a monitoring project to collect data on open roads
- The purpose of the project is to determine the amount of traffic on selected roads within the BCCE
  - Data will help guide management decisions such as patrol times and locations, restoration locations, etc.
- Project uses “TrafX” traffic counters
- Project also tracks traffic trends between the BCCE and adjacent BLM lands in the Piute-Eldorado Valley



desert conservation  
PROGRAM  
respect, protect and enjoy our desert!

# Road Study





desert conservation  
PROGRAM  
respect, protect and enjoy our desert!

## Other activities

- Initiated a five-year review and update to the BCCE Management Plan
- Relocated five desert tortoises to the BCCE from the Solar One facility
- Initiated Phase I of restoration to linear disturbances within the BCCE



desert conservation  
PROGRAM  
respect, protect and enjoy our desert!

# Future activities

- Round 12 Southern Nevada Public Lands Management Act (SNPLMA) funded projects:
  - Installation of desert tortoise guards at select road openings to the BCCE
  - Installation of additional desert tortoise barriers
  - Design and installation of informational kiosk at key access point to the BCCE from Boulder City
- Phase II restoration of linear disturbances



desert conservation  
PROGRAM  
respect, protect and enjoy our desert!

Questions?